

Greenlee

## Two-Piece Elongated Toilet



### Product Features

- 0.8 gpf
- Gravity-fed siphon jet flush
- Vitreous china
- 17" elongated ADA bowl
- Rough-in: 12"
- Flush Valve: 3"
- Trapway: 2" fully glazed
- Water Spot: 7" x 6"
- Large Footprint: 23-1/4" x 11"
- Front-mounted color match trip lever
- Sanitary bar on bowl for easy cleaning
- Quick connect, two-bolt tank-to-bowl installation

### Optional Accessories/Available Parts

- PF9812FLPK**      Fill Valve Assembly  
**PF9812FVPK**      Flush Valve Assembly with Flush Lever



### Codes and Certifications



- IAPMO/cUPC
- EPA WaterSense Certified
- ASME A112.19.2 / CSA B45.1
- MaP Rated 1000g
- Meets ADA guidelines

### Caution

Toilets are recommended FOR RESIDENTIAL APPLICATIONS or those other installations where sufficient volumes of supplemental flows of water are introduced into the building drainline system near the toilet fixture (clothes washers, showers, dishwashers, process water, food service operations, sinks, etc).

Available Colors: White (WH)

#### Tank

**PF9812WH**      12" Rough-in Tank

**PF9812RWH**      12" Rough-in Right Hand Tank

#### Bowl

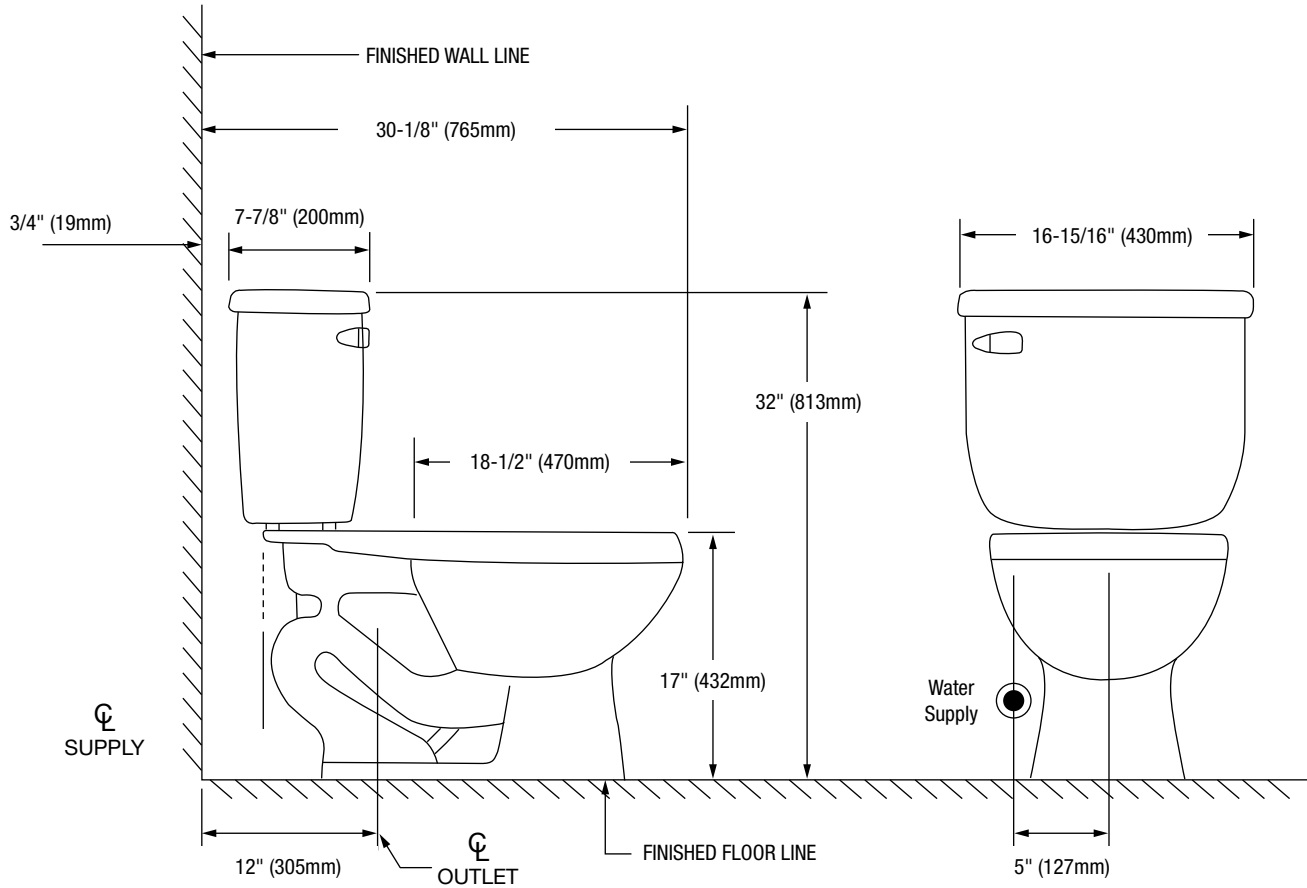
**PF9803AWH**      Elongated ADA Bowl - 17"

Visit [ferguson.com/PROFLO-vitreous-china-warranty](http://ferguson.com/PROFLO-vitreous-china-warranty) for detailed warranty information.

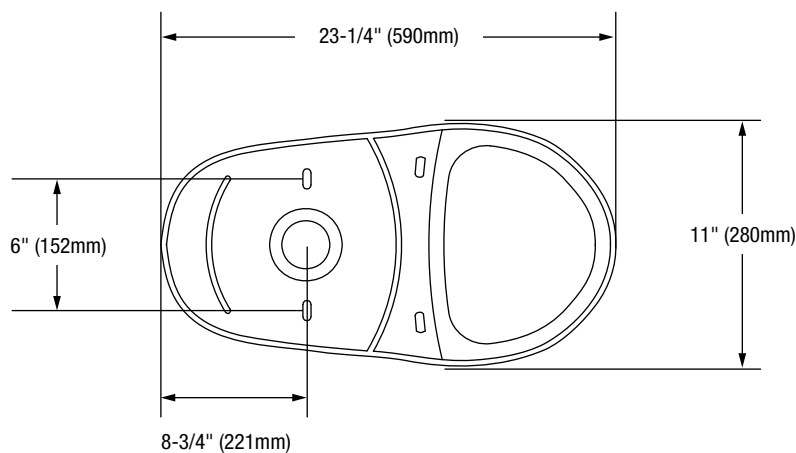
**FERGUSON.COM/PROFLO**

Greenlee

## Two-Piece Elongated Toilet



### Bowl Footprint Dimensions



Note: All dimensions and specifications are nominal and may vary: Dimensions of 8" and greater have a tolerance of +3%. Dimensions less than 8" have a tolerance of +5%.